

The First Line of Defense Against Toxicants

Now with glyphosate and parabens

Discover the Power of Personalized Functional Medicine Testing

Revealing how common and harmful exposure to environmental toxicants can be, Mosaic Diagnostics testing equips you to make well-informed decisions for improving your health. Exposure to toxicants may present as unexplained symptoms, with repercussions that can increase the risk of certain cancers, birth defects, neurological disorders, immune dysfunction and more.

Our comprehensive test identifies environmental toxicants that may be contributing to your health challenges, offering clarity and insight. **Take proactive steps towards improved health and discover if your symptoms are toxicant-related.**

Are you experiencing any of the following?

- Behavioral abnormalities
- Cognitive dysfunction
- Eye irritation
- Fatigue
- Headache
- Memory disturbance
- Mood changes
- Nausea and vomiting
- Neurological symptoms
- Respiratory problems

Environmental toxicant exposure has been associated with the following:

- ADHD
- Alzheimer's Disease
- Asthma
- Autism Spectrum
- Birth Defects
- Cardiovascular Disease
- COPD
- Diabetes
- Endocrine Disruption
- Endometriosis
- Immune Dysfunction
- Infertility
- Obesity
- Parkinson's Disease
- Various Cancers

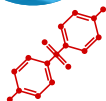
What are Environmental Toxicants?

Environmental toxicants, lurking in every corner of our surroundings, pose an imminent threat to your well-being. Whether born of nature or human activity, these insidious toxicants creep in through industrial activities, pollution, agriculture, and waste disposal, and their usage is on the rise. **The reality is, you've likely encountered these silent assailants. The question is: How deeply are they impacting your health?**

Why Test for Environmental Toxicants?

Testing for exposure to environmental toxicants can alert you to contaminants in your environment. To mitigate and treat toxicant exposures, they must first be identified. Testing is your key to uncovering potential threats and securing a healthier future.





How Can Someone Be Exposed?

Daily encounters can expose us to environmental toxicants through inhalation, ingestion, and dermal contact with:

- Automobile Exhaust
- Baby Products
- Building Materials
- Canned Foods
- Carpeting
- Cigarettes
- Consumer Goods
- Cosmetics
- Drinking Containers
- Electronics
- Food and Food Packaging
- Furniture and Flooring
- Herbicides
- Insecticides
- Paints/Sealants
- Pesticides
- Receipt Paper
- Rodenticides
- Shampoos
- Styrene Containers
- Toys



Scan QR code now
to learn more about
our TOXDetect Profile®

Trust our test to help unlock the mystery behind your symptoms,
breaking the dead end of treatment.



Assesses metabolites of commonly exposed toxicants such as phthalates, volatile organic compounds, parabens, pesticides, glyphosate and more.



Utilizes cutting-edge technology to deliver highly specific and accurate test results.



Convenient, at-home sampling for everyone, without invasive procedures.

**MosaicDX Makes Testing Simple and Convenient
with an Easy At-Home Urine Collection**



Ready to get started?

Talk to your healthcare provider today!

Any Questions?

Visit [MosaicDX.com](https://mosaicdx.com) for more resources or call our customer service team at (800) 288-0383.



**MOSAIC
DIAGNOSTICS**
Formerly Great Plains Laboratory

CERTIFIED BY THESE
PRESTIGIOUS ORGANIZATIONS



Visit [MosaicDX.com](https://mosaicdx.com) for more resources

Find references at mosaicdx.com/test/toxdetect-profile/

(800) 288-0383 customerservice@mosaicdx.com

8400 W 110th Street, Suite 500, Overland Park, KS 66210



All trademarks are owned by the company and its affiliates. ©2025 Mosaic Diagnostics. All Rights Reserved. MDX-TOX-PA-FB 8-2025 v.5