



**TOXDetect**

PROFILE

# Unraveling the Health Impacts of Environmental Toxic Burden



**MOSAIC**  
DIAGNOSTICS

# Holistic Care Starts with Assessing Environmental Toxicant Exposure

## What are Environmental Toxicants?

Environmental toxicants are substances present in the environment that threaten the health of all living organisms. Whether natural or human-made, these substances infiltrate through industrial activities, pollution, agriculture, and waste disposal.

- Considering plastics alone, there is a shocking surge in production – 2000% from 15 million to 311 million tons between 1964 and 2014.
- The burden of disease costs from Endocrine Disrupting Chemicals is costing \$340 billion annually.

Almost everyone has encountered environmental toxicants; however, ***the crucial factor lies in understanding the extent of their impact on patients' health.***

## Why Test for Exposure?

Identifying and removing environmental toxicant exposure is fundamental to achieving comprehensive and lasting health outcomes for patients. Continuous and increasing exposure to environmental toxicants is posing serious health threats like those listed below.

## Recognize Environmental Toxicant Exposure

### Associated Symptoms

- Behavioral abnormalities
- Cognitive dysfunction
- Eye irritation
- Fatigue
- Headache
- Memory disturbance
- Mood changes
- Nausea and vomiting
- Neurological symptoms
- Respiratory problems

### Associated Conditions and Diseases

- ADHD
- Alzheimer's Disease
- Asthma
- Autism Spectrum
- Birth Defects
- Cardiovascular Disease
- COPD
- Diabetes
- Endocrine Disruption
- Endometriosis
- Immune Dysfunction
- Infertility
- Obesity
- Parkinson's Disease
- Various Cancers

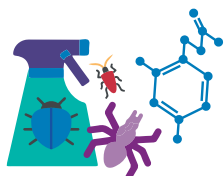
Learn More  
About Our  
TOXDetect  
Profile



# Mosaic Diagnostics TOXDetect Profile

The TOXDetect Profile is a urinary assessment of exposure to environmental toxicants. The profile measures a variety of metabolites to screen for exposure to common chemicals. With **state-of-the-art LC-MS/MS technology**, it guarantees unmatched accuracy and reliability through a **single sample**. Results, presented on an easily comprehensible report, empower practitioners with essential insights for informed decision-making.

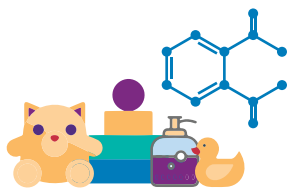
## TOXDetect Profile – Chemical Classes



### Pesticides

Used in agriculture, public health, and households to protect crops, control disease-carrying insects, and manage pests.

Exposure occurs through inhalation of contaminated air, consumption of contaminated food and water, or contact with contaminated soil.



### Phthalates

“Everywhere chemicals” used in products encountering plastics during manufacturing, packaging, or transportation.

Exposure to these endocrine disruptors is ubiquitous. They are found in common items including toys, food packaging, shampoo, and vinyl flooring.



### Bisphenol S

Bisphenols, commonly used in plastics and resins found in various consumer items such as food containers, water bottles, dental sealants, and cosmetics.

While some companies offer “BPA-Free” products, alternative bisphenols like BPS have raised concerns about similar potential health effects.



### Volatile Organic Compounds

Volatile Organic Compounds (VOCs) readily evaporate into the air and exposures occur through household and beauty products, building materials, and cigarette smoke, vehicle emissions, industrial processes, construction, agricultural activities, as well as paints, coatings, and sealants. Includes common VOCs like **Vinyl Chloride**, **Xylene**, **Styrene**, and **Benzene**.



### Other Chemicals

Other common toxicants that can cause acute or chronic toxic overload when absorbed, inhaled or ingested. Includes **Perchlorate**, **Acrylamide**, and **Triphenyl Phosphate**.



# Clinical Considerations Following a TOXDetect Profile

Utilizing TOXDetect Profile enables precise identification of environmental toxicants in patients. Results should be used with consideration of the patient's unique history and presentation. Practitioners working with environmental toxicant exposures focus on three key steps:

## Step 1

### Address Environmental Exposure:

Remove or avoid the source of exposure.

## Step 2

### Support the Foundations of Health:

Optimize detoxification, hydration, and nutrition.

## Step 3

### Personalize Therapeutic Journey:

Indicated use of supplements, medications, induced sweating, and dietary adjustments.

## Supercharge Clinical Utility with Complementary Tests

Discover the interplay of environmental toxicants and their health impacts.

### EnviroTOX

#### TOXDetect Profile + Organic Acids Test + Glyphosate Test

Assesses exposure and impact of environmental toxicants and potential effects on mitochondrial function, gut health, neurotransmitter metabolism detoxification capacity, and nutrient status.

### EnviroTOX Complete

#### TOXDetect Profile + Organic Acids Test + Glyphosate Test + MycoTOX Profile

Evaluate the impact of environmental toxicants and mycotoxins on mitochondrial function, gut health, neurotransmitter metabolism detoxification capacity, and nutrient status to offer a more accurate and targeted evaluation.

### EnviroTOX Complete + Metals

#### TOXDetect Profile + Organic Acids Test + Glyphosate Test + MycoTOX Profile + Metals - Toxic Elements

Empowers healthcare professionals to design targeted treatment plans by considering the interplay of various toxic substances for more tailored interventions.

Open your account to access free clinical consultations.



All trademarks are owned by the company and its affiliates.  
©2023 Mosaic Diagnostics. All Rights Reserved. MDX-TOX\_PRACT 3-2024 v.1

Visit [MosaicDX.com](https://mosaicdx.com) for more resources

(800) 288-0383 [customerservice@mosaicdx.com](mailto:customerservice@mosaicdx.com)  
8400 W 110th Street, Suite 500, Overland Park, KS 66210

