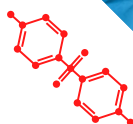
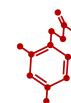
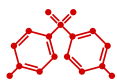




TOXDetect
PROFILE®

The First Line of Defense Against Toxicants

Now with glyphosate and parabens



MOSAIC
DIAGNOSTICS



Mosaic Diagnostics TOXDetect Profile®

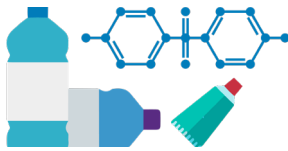
The TOXDetect Profile® is a urinary assessment of exposure to environmental toxicants. The profile measures a variety of metabolites to screen for exposure to common chemicals. With **state-of-the-art LC-MS/MS technology**, it guarantees unmatched accuracy and reliability through a **single sample**. Results, presented on an easily comprehensible report, empower practitioners with essential insights for informed decision-making.

TOXDetect Profile® – Chemical Classes



Phthalates

"Everywhere chemicals" used in products encountering plastics during manufacturing, packaging, or transportation. Exposure to these endocrine disruptors is ubiquitous. They are found in common items including toys, food packaging, shampoo, and vinyl flooring.



Bisphenol

Bisphenols, commonly used in plastics and resins found in various consumer items such as food containers, water bottles, dental sealants, and cosmetics. While some Parabens are a class of synthetic chemicals commonly used as preservatives in cosmetics, personal care products, pharmaceuticals, and some food items.



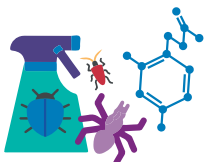
Volatile Organic Compounds

Volatile Organic Compounds (VOCs) readily evaporate into the air and exposures occur through household and beauty products, building materials, and cigarette smoke, vehicle emissions, industrial processes, construction, agricultural activities, as well as paints, coatings, and sealants. Includes common VOCs like **Vinyl Chloride, Xylene, Styrene, and Benzene**.



Parabens

Parabens are a class of synthetic chemicals commonly used as preservatives in cosmetics, personal care products, pharmaceuticals, and some food items. Concerns about their impact on human health include the potential for endocrine disruption, links to breast cancer, and increased BMI.



Pesticides

Used in agriculture, public health, and households to protect crops, control disease-carrying insects, and manage pests. Includes common pesticides like **Glyphosate, Atrazine, and 2,4-D**. Exposure occurs through inhalation of contaminated air, consumption of contaminated food and water, or contact with contaminated soil.



Other Chemicals

Other common toxicants that can cause acute or chronic toxic overload when absorbed, inhaled or ingested. Includes **Perchlorate, Acrylamide, and Triphenyl Phosphate**.

Clinical Considerations Following a TOXDetect Profile®

Utilizing TOXDetect Profile® enables precise identification of environmental toxicants in patients. Results should be used with consideration of the patient's unique history and presentation. Practitioners working with environmental toxicant exposures focus on three key steps:

Step 1

Address Environmental Exposure:

Remove or avoid the source of exposure.

Step 2

Support the Foundations of Health:

Optimize detoxification, hydration, and nutrition.

Step 3

Personalize Therapeutic Journey:

Indicated use of supplements, medications, induced sweating, and dietary adjustments.

Supercharge Clinical Utility with Complementary Tests

Discover the interplay of environmental toxicants and their health impacts.



Organic Acids Test (OAT) + TOXDetect Profile® (includes Glyphosate)



OAT + TOXDetect Profile® (includes Glyphosate) + MycoTOX Profile®



OAT + TOXDetect Profile® (includes Glyphosate) + MycoTOX Profile® + Metals - Toxic Elements



TOXDetect Profile® (includes Glyphosate) + MycoTOX Profile® + Metals - Toxic Elements

Open your account to access free clinical consultations.



CERTIFIED BY THESE PRESTIGIOUS ORGANIZATIONS



Visit MosaicDX.com for more resources

Find references at MosaicDX.com/Test/TOXDetect-Profile

(800) 288-0383 customerservice@mosaicdx.com

8400 W 110th Street, Suite 500, Overland Park, KS 66210



All trademarks are owned by the company and its affiliates.

©2025 Mosaic Diagnostics. All Rights Reserved. MDX-TOX_PRACT 4-2025 v.3

Holistic Care Starts with Assessing Environmental Toxicant Exposure

What are Environmental Toxicants?

Environmental toxicants are substances present in the environment that threaten the health of all living organisms. Whether natural or human-made, these substances infiltrate through industrial activities, pollution, agriculture, and waste disposal.

- Considering plastics alone, there is a shocking surge in production – 2000% from 15 million to 311 million tons between 1964 and 2014.
- The burden of disease costs from Endocrine Disrupting Chemicals is costing \$340 billion annually.

Almost everyone has encountered environmental toxicants; however, ***the crucial factor lies in understanding the extent of their impact on patients' health.***

Why Test for Exposure?

Identifying and removing environmental toxicant exposure is fundamental to achieving comprehensive and lasting health outcomes for patients. Continuous and increasing exposure to environmental toxicants is posing serious health threats like those listed below.

Recognize Environmental Toxicant Exposure

Associated Symptoms

- Behavioral abnormalities
- Cognitive dysfunction
- Eye irritation
- Fatigue
- Headache
- Memory disturbance
- Mood changes
- Nausea and vomiting
- Neurological symptoms
- Respiratory problems

Associated Conditions and Diseases

- ADHD
- Alzheimer's Disease
- Asthma
- Autism Spectrum
- Birth Defects
- Cardiovascular Disease
- COPD
- Diabetes
- Endocrine Disruption
- Endometriosis
- Immune Dysfunction
- Infertility
- Obesity
- Parkinson's Disease
- Various Cancers

Learn More
About Our
TOXDetect
Profile®

